

MÜHLBAUER'S INSPECTION SOLUTION

FOR ALL QUALITY ASPECTS OF YOUR BLANK COIN

Mühlbauer's inspection solution COIN INSPECT BLANK has been designed to cover all quality aspects of blank coins in a high-speed, double-sided inspection process.

Based on long-term experience, field proven methods and state-of-the-art technologies, COIN INSPECT BLANK offers the highest performance available on the market for a full-area, double-sided inspection and measurement of

- Disks, rings, polygons, assembled/bi-metal
- Steel, copper, aluminum, nickel, brass, alloyed & coated blanks
- Diameter 10.0 – 35.0 mm, thickness 0.8 – 4.0 mm, weight 1.5 – 30.0 gr.

at a throughput rate of max. 3,000 UPM in a three-shift-operation.

The smooth flow of blanks on two lanes is maintained through the whole inspection process by the perfect interplay of feed, separation/alignment unit and transport incl. turning station. Due to the certified reject process, mixing of defective blanks with good quality blanks is absolutely excluded. COIN INSPECT BLANK generates a detailed job/batch report.

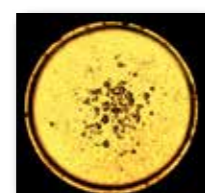
The machine configuration is especially designed for the specific requirements of blank coins & covers:

- Surface inspection
- Color inspection
- Shape inspection
- Optional: determination of dimensions (diameter & thickness)

The windows-based inspection software has a well-structured graphical user interface and comes with a user administration for access control. The operator is granted easy access to all mechanical parts of the machine. The exchange of vision components has been simplified by a standardized cassette system. Maintenance and changeover are quick and easy.

We provide our customers with local support worldwide without any external partners.

ACCURACY



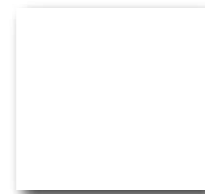
SURFACE

Resolution ratio:
0.030 - 0.035 mm/pixel



DIAMETER / THICKNESS

± 0.025 mm / ± 0.040 mm



ANY OTHER REQUIREMENTS?

Feel free to ask for the COIN INSPECT BLANK or COIN INSPECT FLEX

MÜHLBAUER GERMANY

Mühlbauer Group Headquarters
Josef-Mühlbauer-Platz 1, 93426 Roding, Germany
Phone: +49 9461 952 0, Fax: +49 9461 952 1101
info@muehlbauer.de, www.muehlbauer.de

MÜHLBAUER USA

Muehlbauer Inc.
226 Pickett's Line
Newport News, VA 23603-1366, USA
Phone: +1 757 947 2820, Fax: +1 757 947 2930
info@muehlbauer.com, www.muehlbauer.com

MÜHLBAUER MALAYSIA

Muehlbauer Technologies Sdn. Bhd.
No. 3 Jalan TU 62, Taman Tasik Utama,
75450 Melaka, Malaysia
Phone: +60 6 2517 100, Fax: +60 6 2517 101
info@muehlbauer.com.my, www.muehlbauer.com.my

MÜHLBAUER SERBIA

Mühlbauer Technologies d.o.o.
Evropska 17, 22300 Stara Pazova, Serbia
Phone: +381 22 215 5100, Fax: +381 22 215 5130
serbia@muehlbauer.de, www.muehlbauer.de

MÜHLBAUER CHINA

Muehlbauer Technologies (Wuxi) Co., Ltd.
No 23. Huayi Road, Wuxi New District
214135 Wuxi, Jiangsu, China
Phone: +86 510 8190 0100, Fax: +86 510 8190 0101
info@muehlbauer.cn, www.muehlbauer.cn

MÜHLBAUER SLOVAKIA

Muehlbauer Technologies s.r.o.
Novozámocká 233, 94905 Nitra, Slovakia
Phone: +421 37 6946 000, Fax: +421 37 6946 501
info@muehlbauer.sk, www.muehlbauer.com

COIN INSPECT BLANK

INSPECTION SOLUTION FOR BLANKS



MÜHLBAUER GmbH & Co. KG

Josef-Mühlbauer-Platz 1 | 93426 Roding | Germany
Tel.: +49 9461 952 0 | Fax: +49 9461 952 1101
Mail: info@muehlbauer.de | Web: www.muehlbauer.de







COIN INSPECT BLANK

THE INSPECTION SOLUTION FOR ALL QUALITY ASPECTS OF YOUR BLANK COIN

Length of machine: 2,664 mm
 Depth of machine: 700 mm
 Max. depth with hopper & control cabinet: 2,086 mm
 Height with closed doors: 1,910 mm



KEY MODULES

-  Blank feed & blank separation
-  Blank turning unit
-  Surface inspection
-  High speed double lane blank transport
-  Blank sorting
-  Dimension determination (optional)



FEATURES & ADVANTAGES



CAPACITY

- Up to 180,000 UPH; up to 3,000 UPM
- Blank diameter: 10.0 - 35.0 mm
- Blank thickness: 0.8 - 4.0 mm
- Blank weight: 1.5 - 30.0 gr.



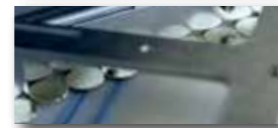
BLANK FEED

- Loading hopper capacity: 400 liters
- Vibrating extraction tray with guillotine door
- Continuous feed through additional container
- Output controlled by level sensors



BLANK HANDLING

- Separation & alignment unit
- Recirculation of blank overflow to the hopper unit
- Two parallel transport lanes
- Smooth transport on seamless conveyer belts
- No blank jamming between belt & alignment rails
- Sensor system for continuous blank tracking
- Practice-approved turning wheel for double-sided inspection
- Easy changeover to new blank type in less than two minutes



SORTING

- Up to 2 active eject channels per lane for detailed sorting (patent pending WO2018050427A1)
- One passive eject channel per lane
- 100% reliable sorting technology
- Good parts are actively removed from the belt
- Output channel as an open interface to local material transport



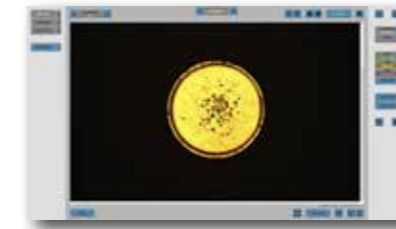
VISION

- Windows®-based operating system
- Straightforward GUI for easy operation
- Parameters can be copied to other inspection stations
- Different types of job / batch reports available
- User management with different user levels



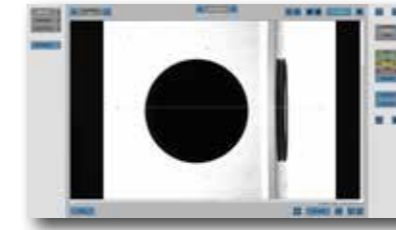
CONFIGURATION

- Inspection units housed in standardized cassette system
- 3 inspection units for both lanes each
- Quick & easy upgrades, retooling & maintenance



SURFACE INSPECTION

- Precise & reliable detection of
 - » Scratches, blisters, stains, dents, rim defects
 - » Half-moons, break ups, cracks
 - » Color deviations, corrosion, partially plated coins
- Bright, long-life, flashable LED co-axial lighting
- Ultra-flat ring lighting for optimal rim illumination
- High-resolution color matrix camera



DETERMINATION OF DIAMETER & THICKNESS (OPTIONAL)

- High precision determination of blank diameter & blank thickness on the belt with camera-prism technology
- Determination of rim thickness
- Diameter verified at various measurement points

YOU NEED MORE?

REQUEST INFORMATION ON



COIN INSPECT MINTED

The inspection solution for minted coins



COIN INSPECT FLEX

The configurable inspection solution for all quality aspects of your coin

